

Personal Fall Arrest Systems



Selecting a good anchor (Can you hang a truck off it?)

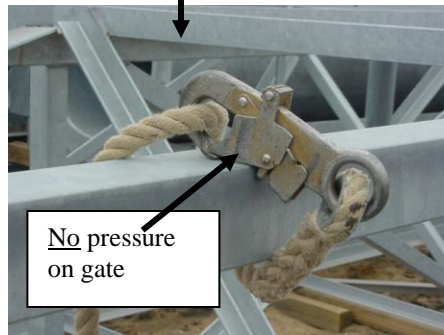
- Bigger is better
- More is better
- Higher is better



Anchorage Connectors

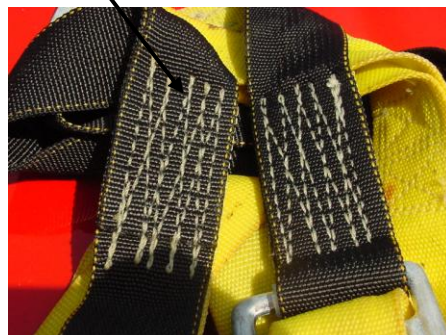
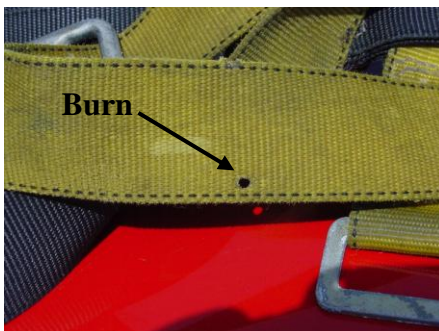
- Compatible with anchorage
- Rated for 5000 lbs
- Inspected

Do not wrap lanyard around anchor unless designed



Inspecting your Personal Fall Arrest System

- Inspect all hardware
 - ✓ Cracks, deformed, not working properly, grommets
- Inspect all straps and lanyards
 - ✓ Burns, holes, fraying, cuts, hard spots
 - ✓ Tags are readable and intact
 - ✓ No broken, cut, burned **stitching**
 - ✓ Lanyards not impacted

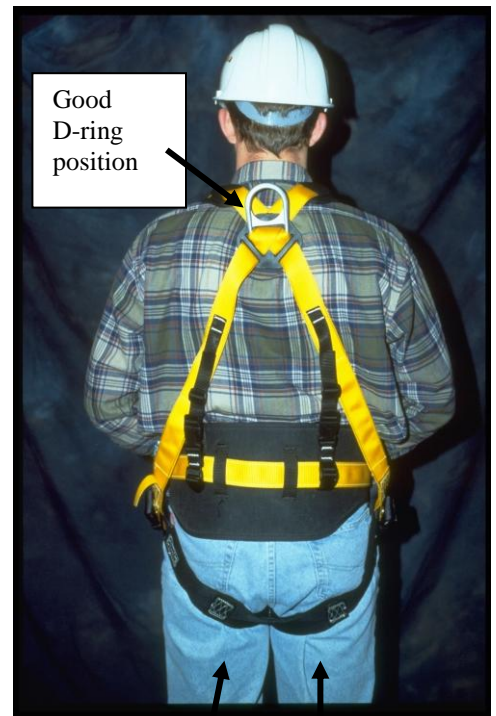


The St. Paul

Shoulder straps adjusted with chest strap



Leg straps snug but not tight



Good D-ring position

Sub-pelvic strap position