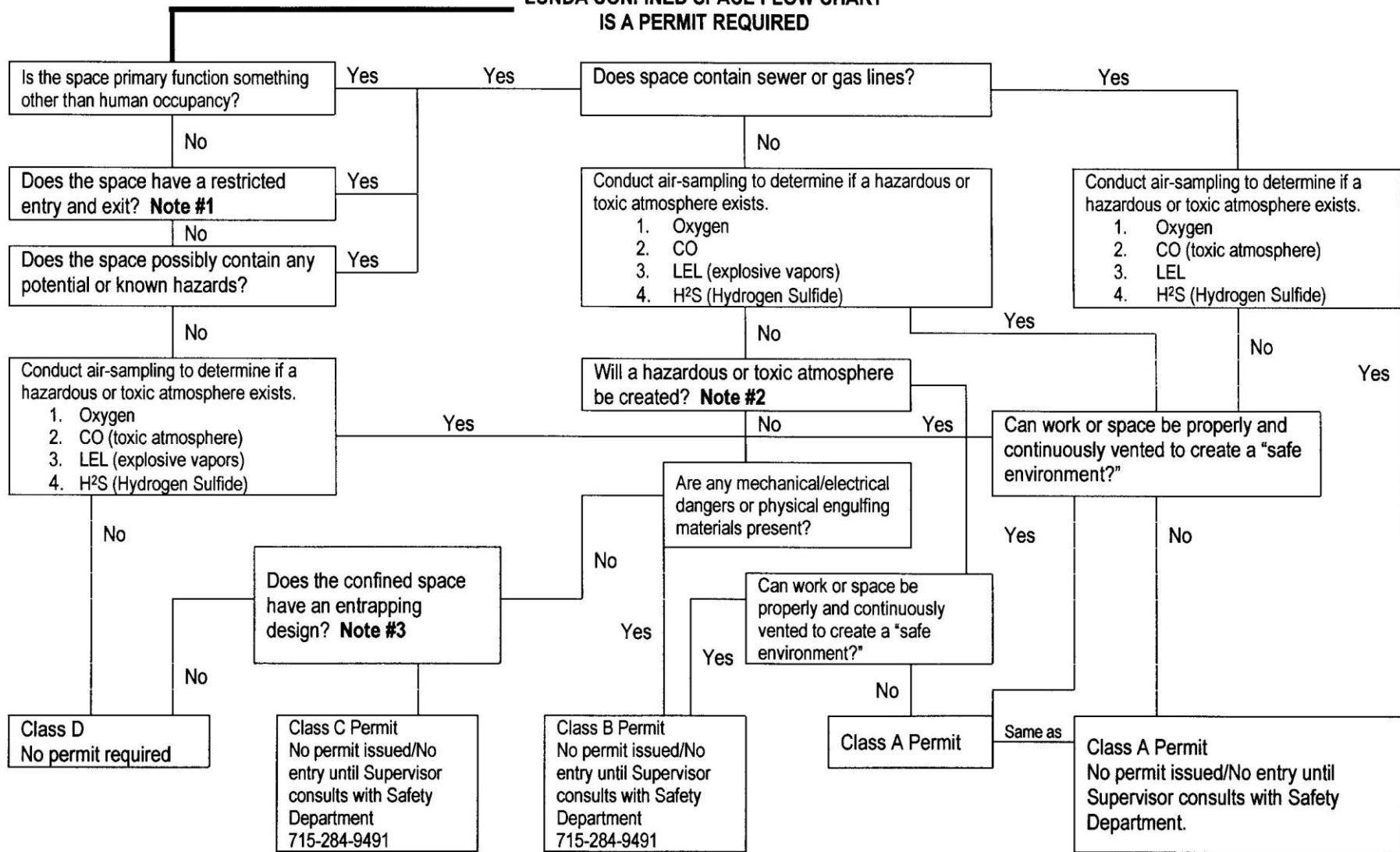


**LUNDA CONFINED SPACE FLOW CHART
IS A PERMIT REQUIRED**



- #1. Restricted entry or exit is when an individual must contort his/her body or when the space descends or ascends greater than four feet, or is limited to one access point.
- #2. Creating a toxic atmosphere would include, but not be limited to, production of gas from the use of any type of chemical, or introducing inerting gases such as helium, nitrogen, methane, argon or carbon dioxide.
- #3. An entrapping design includes inward converging walls, floors that slope and/or taper down, or have only one point of access.